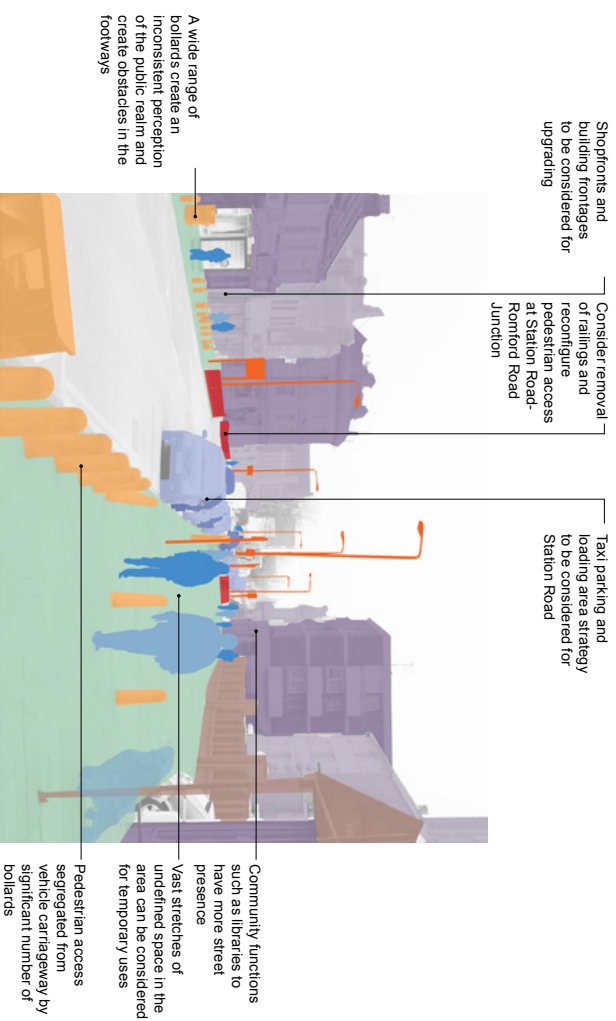
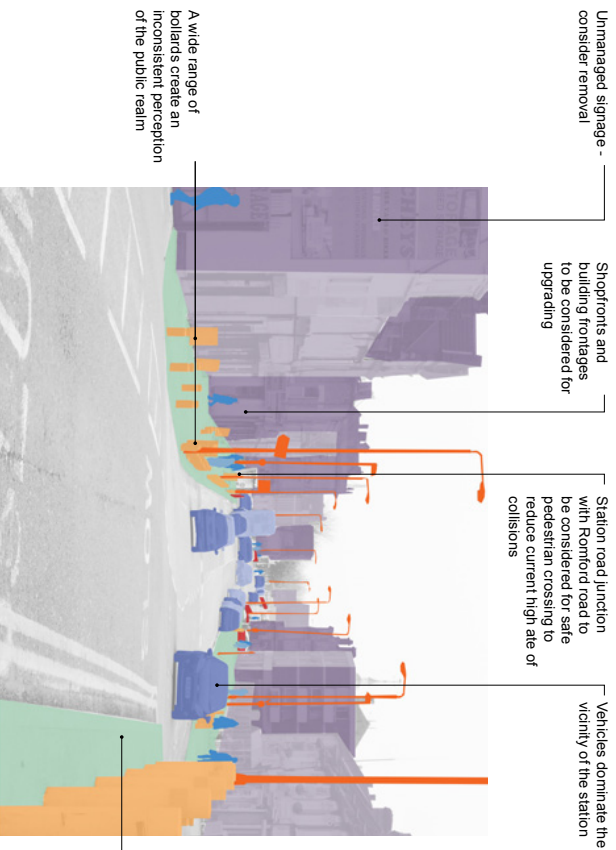


5.3C VISUAL ANALYSIS - STAGE D AREA

1. Station Road looking south



2. Station Road western footway looking south



A wide range of bollards create an inconsistent perception of the public realm

A wide range of bollards create an inconsistent perception of the public realm and create obstacles in the footways

5.3C VISUAL ANALYSIS - STAGE C AREA

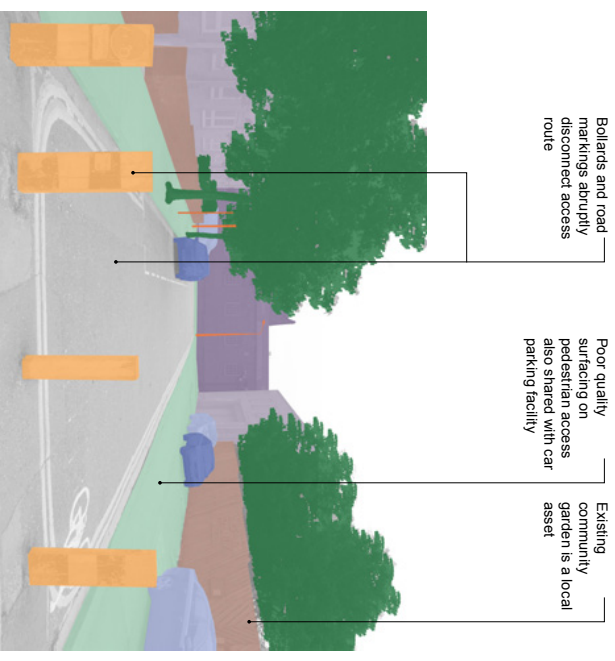
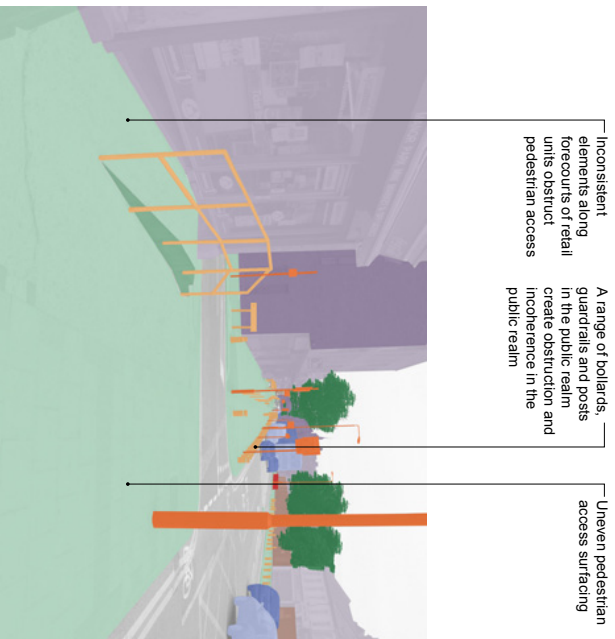
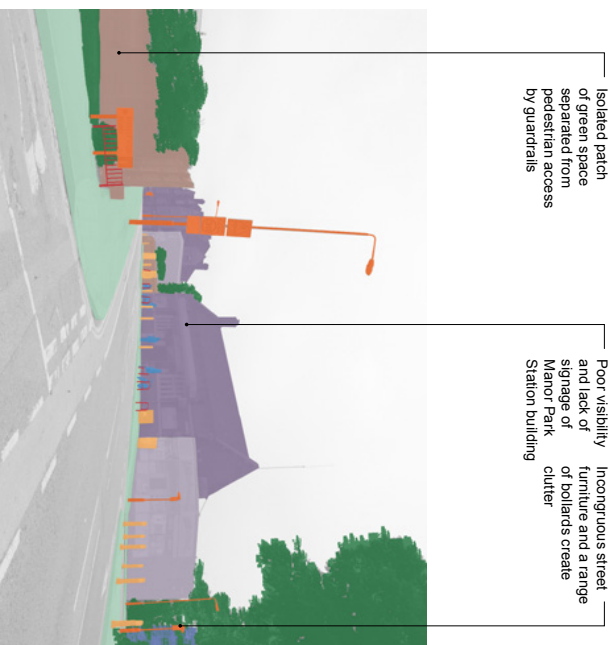
3. Forest View Road looking towards Manor Park Station



4. Romford Road looking east at junction with Carlton Road



5. Manor Park road (north)



6. Station Road junction with Romford Road

5



Excessive guard railing
obstructs pedestrian
access along desire lines

Bollards and other floor
mounted structures
create clutter

Forecourts of retail
and community facility
buildings have poor
quality surfacing and fail
to connect with the public
realm

Pedestrian desire line
for diagonal crossing
at the junction is
ignored in the existing
layout

Consider removal of
yellow box road markings

