

20's Plenty For Us – Background Info about Newham – July 2017

Please find below some background data on road casualties in LB Newham and public health in terms of indicators of physical activity.

1. Road Casualties.

- Data on road casualties is now freely available and TfL area increasingly trying to create open source data that anyone can investigate. The road casualty data that TfL issues¹ comes from the Met Police STATS19 data source and the data that is used here comes from the section entitled Data Extracts.
- The severity of road casualties is divided into three categories – fatal, serious and slight. Fatal and serious and often taken together and described as those who are killed and seriously injured.
- In terms of total casualties (ie of all three severities), levels in Newham in 2015 are almost 10% higher than in 2005 whereas across Greater London the figure is 5% lower.

1.1. Total Casualty Numbers - LB Newham and Greater London (All Severities)

	2005	2006	2007	2008	2009	2010	2011	2012	2013	2014	2015
Total Newham	1,033	1,011	1,005	1,077	946	911	908	924	830	965	1,132
Change from 2005 (Newham)		-2.1%	-2.7%	4.3%	-8.4%	-11.8%	-12.1%	-10.6%	-19.7%	-6.6%	9.6%
Total London	31,830	29,810	28,361	28,153	27,979	28,889	29,257	28,780	27,199	30,785	30,182
Change from 2005 (London)		-6.3%	-10.9%	-11.6%	-12.1%	-9.2%	-8.1%	-9.6%	-14.5%	-3.3%	-5.2%

- In terms of the number of people killed and seriously injured, levels in Newham in 2015 are just 10% lower than in 2005 whereas across Greater London the figure is almost 43% lower. The numbers killed and seriously injured have seen consecutive annual rises in the past two years when numbers have still been falling across Greater London.

1.2. Total Casualty Numbers LB Newham (Killed and Seriously Injured ONLY)

	2005	2006	2007	2008	2009	2010	2011	2012	2013	2014	2015
Total Newham	80	75	105	88	93	81	74	77	57	64	72
Change from 2005 (Newham)		-6.3%	31.3%	10.0%	16.3%	1.3%	-7.5%	-3.8%	-28.8%	-20.0%	-10.0%
Total London	3,650	3,946	3,784	3,526	3,227	2,886	2,805	3,018	2,324	2,167	2,092
Change from 2005 (London)		8.1%	3.7%	-3.4%	-11.6%	-20.9%	-23.2%	-17.3%	-36.3%	-40.6%	-42.7%

¹ <https://tfl.gov.uk/corporate/publications-and-reports/road-safety>

- More than four-fifths of casualties (of all severities) in Newham occur on borough-managed roads.

1.3 Structure of Road Casualties by Highway Authority in Newham (All Severities)

	2012	2013	2014	2015
1 TLRN	152	138	145	209
3 Borough	772	692	820	923
Total	924	830	965	1,132
% Borough	84%	83%	85%	82%

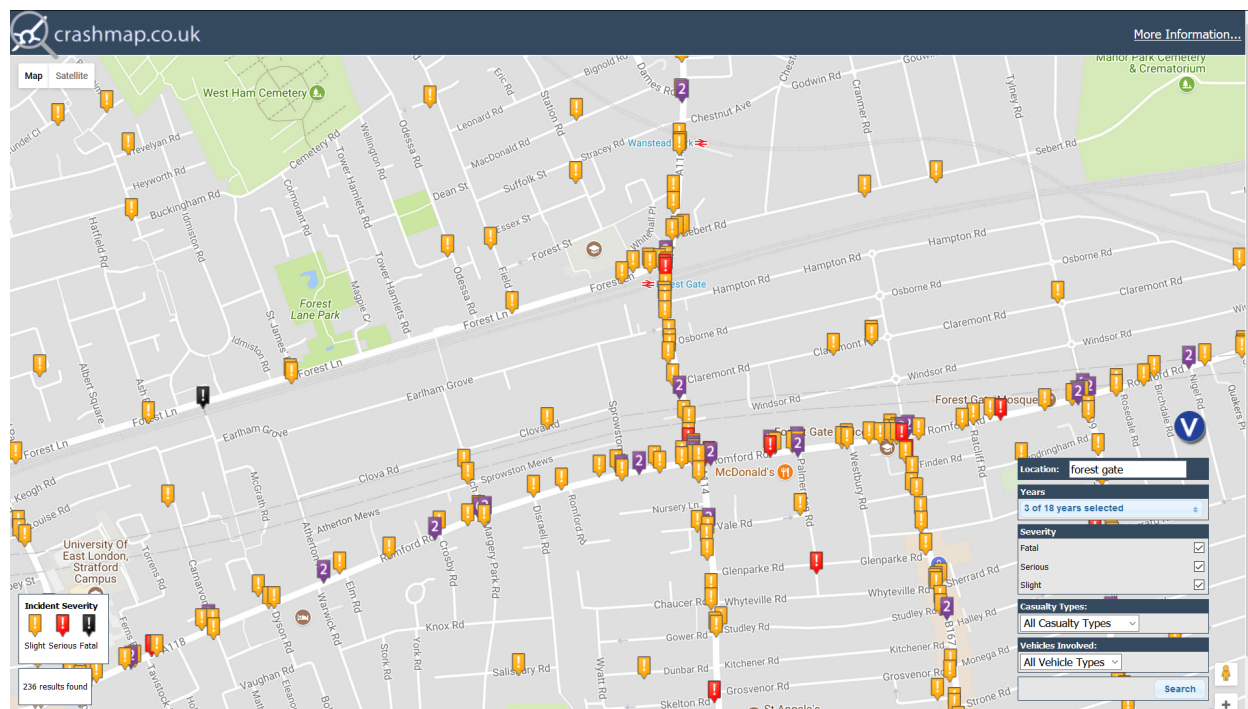
- On average over the last four years 88% of killed and seriously injured casualties in Newham occur on borough-managed roads.

1.4 Structure of Road Casualties by Highway Authority in Newham (Killed and Seriously Injured ONLY)

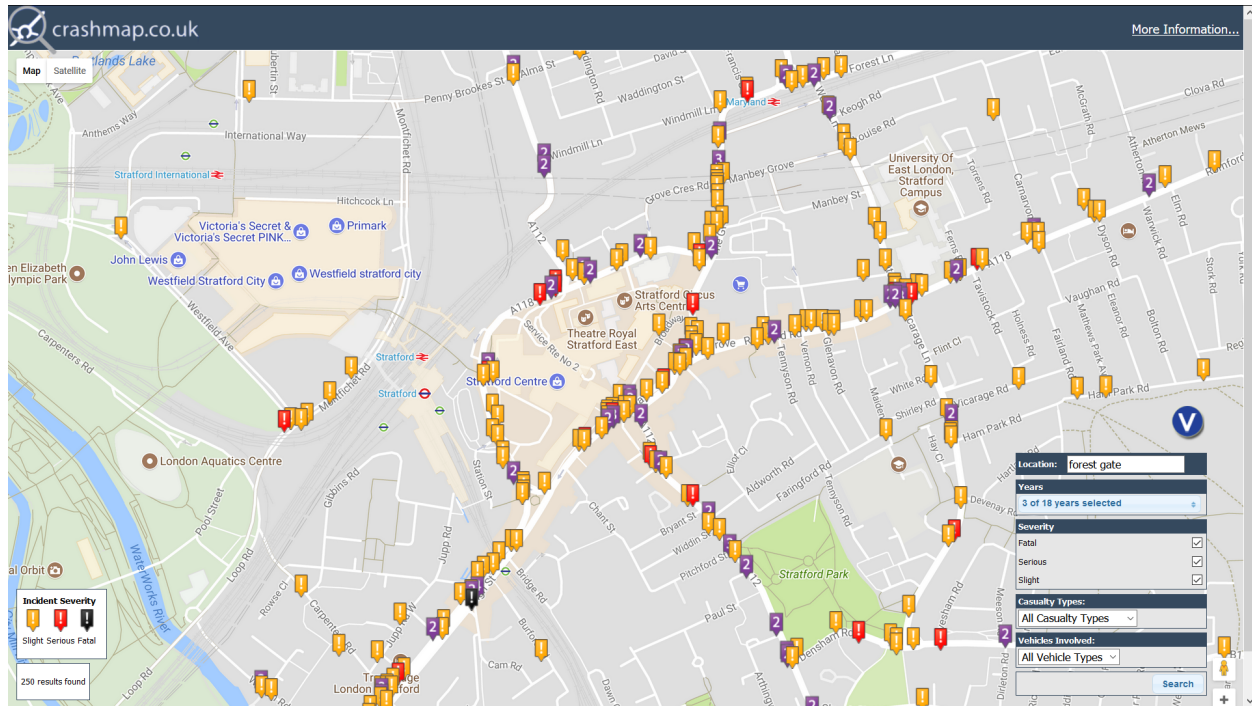
	2012	2013	2014	2015
1 TLRN	7	7	3	15
3 Borough	70	50	61	57
Total	77	57	64	72
% Borough	91%	88%	95%	79%

1.5 Locations of Casualties. Of the locations that were discussed, below are the CrashMaps (crashmap.co.uk) for each. Each map shows casualties of all severities for the full years 2013 to 2015. The clear pattern is (as across the whole of London) that of the casualties occurring on the more major roads.

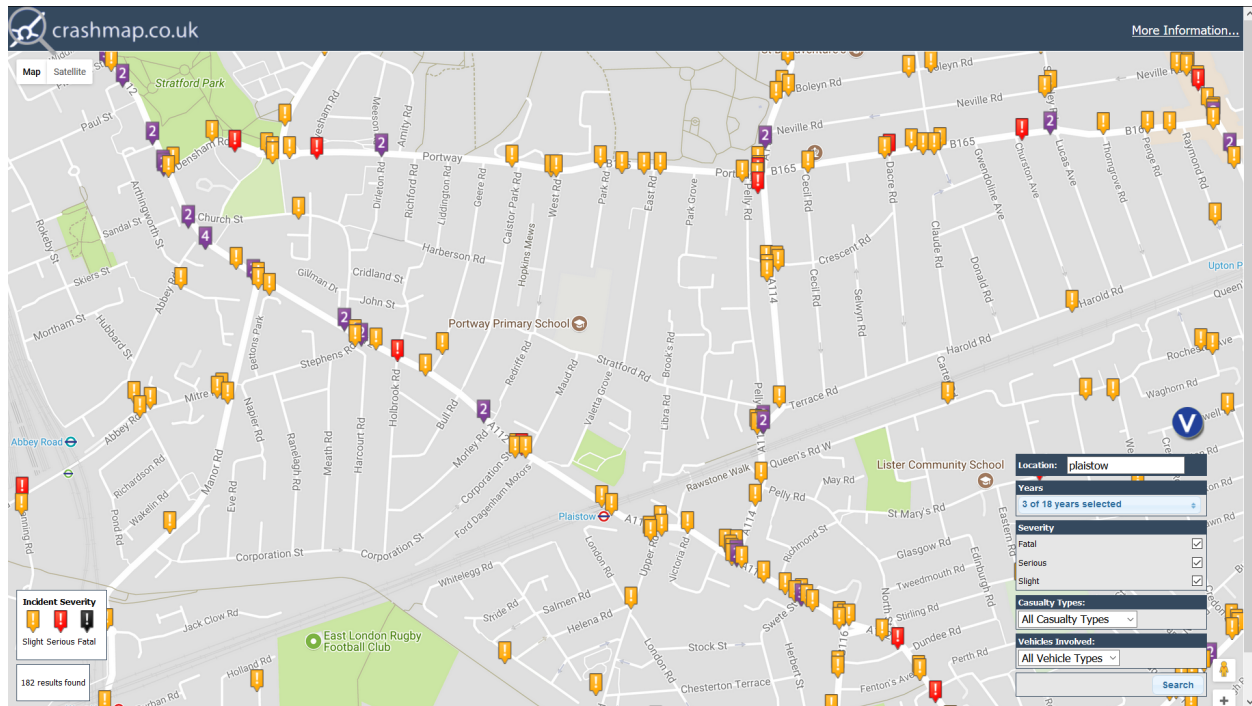
a. Forest Gate



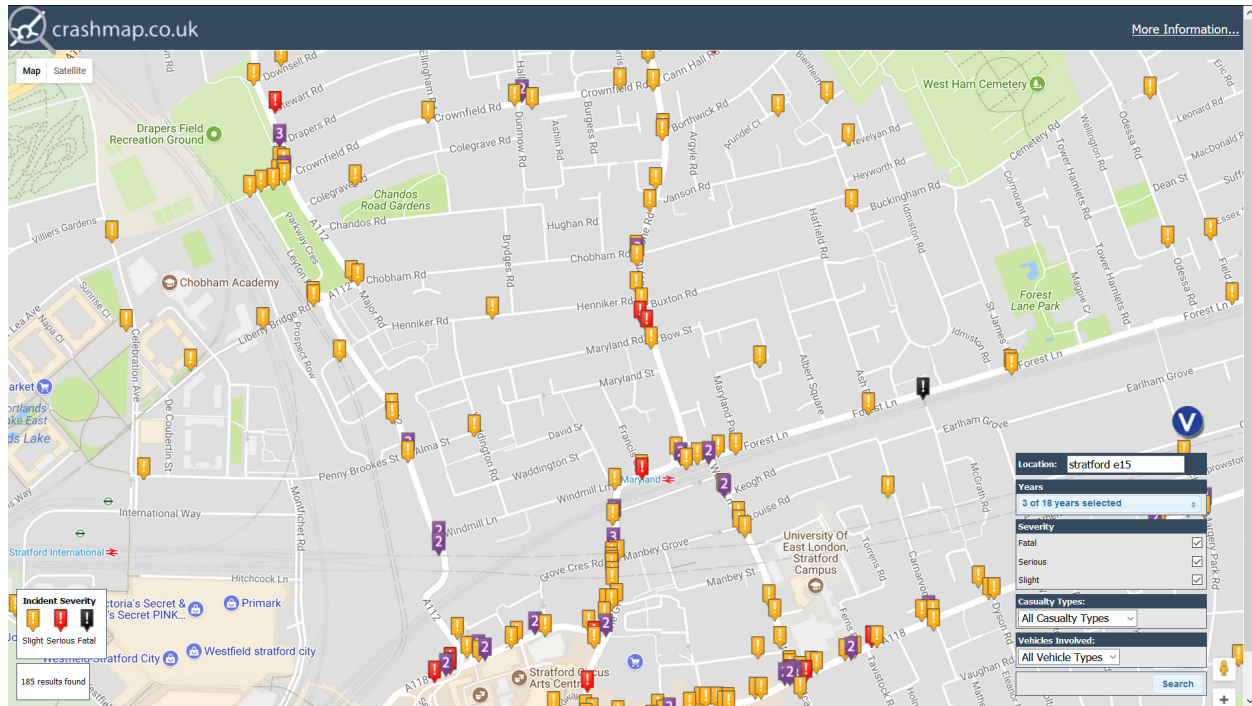
b. Stratford



c. Plaistow



d. Maryland



2. Public Health

2. 1. Obesity and Overweight in Children²

- The picture in Newham is significantly worse in relation to the England and London averages for Child Excess Weight amongst Reception year 4-5 year olds (2.06i) (24.6% overweight or obese) and Year 6, 10-11 year olds (2.06ii) (43.1% overweight or obese). These levels compare to London averages of 22.0% of 4-5 year olds being of excess weight and 38.1% of 10-11 year olds.

FileEditViewHistoryBookmarksToolsHelp

CrashMapPublic Health Outcomes Framework

www.phoutcomes.info/public-health-outcomes-framework#page/0/gid/1000042/pat/6/par/E12000007/ati/101/are/E09000025

Search

☆📁⬇️🏠🔒🚫🌐

Indicator	Period	England	London region	Barking and Dagenham	Barnet	Bexley	Brent	Bromley	Camden	City of London	Croydon	Ealing	Enfield	Greenwich	Hackney	Hammer Smith and Fulham	Haringey	Harrow	Havering	Hillingdon	Hounslow	Islington	Kensington and Chelsea	Kingsdon upon Thames	Lambeth	Leamington	Merton	Newham	Redbridge
breastfeeding prevalence at 6-8 weeks after birth - historical method	2014/15	43.8	*	*	*	*	*	*	*	*	68.5	*	*	*	61.5	*	*	*	*	62.2	*	71.8	*	*	*	74.3	*	*	
2.04 - Under 18 conceptions	2015	20.8	19.2	31.0	11.5	15.8	17.5	15.0	13.5	*	24.1	14.0	22.7	29.2	22.7*	18.4	21.0	13.1	22.3	18.4	20.1	21.4	10.6	14.1	28.7	23.4	14.1	21.9	13.8
2.06i - Child excess weight in 4-5 and 10-11 year olds - 4-5 year olds	2015/16	22.1	22.0	25.4	19.2	25.6	21.7	20.6	20.2	*	21.5	22.6	24.3	27.4	24.7*	21.3	23.6	17.6	23.2	19.8	20.7	22.5	25.3	14.3	23.4	22.5	18.8	24.6	19.1
2.06ii - Child excess weight in 4-5 and 10-11 year olds - 10-11 year olds	2015/16	34.2	38.1	43.4	Barking and Dagenham 25.4%					*	38.9	38.6	41.5	42.9	43.3*	34.6	38.4	35.9	37.3	37.2	38.4	36.5	34.4	29.7	39.4	38.2	34.7	43.1	39.1
2.07i - Hospital admissions caused by unintentional and deliberate injuries in children (aged 0-14 years)	2015/16	104.2	80.8	72.8	Prevalence of overweight (including obese) among children in Reception					*	94.9	79.3	85.8	89.9	82.5*	78.8	91.0	64.4	84.9	90.4	90.7	78.2	66.8	83.6	82.5	110.1	102.4	65.8	65.2
2.07ii - Hospital admissions caused by unintentional and deliberate injuries in children (aged 0-4 years)	2015/16	129.6	97.6	97.8	68.3	120.4	80.2	75.5	70.1	*	113.0	92.1	130.3	117.5	114.7*	81.9	118.5	77.2	97.7	102.0	117.0	84.2	79.1	124.1	83.0	121.7	122.3	75.3	88.5
2.07iii - Hospital admissions caused by unintentional and deliberate injuries in young people (aged 15-24 years)	2015/16	134.1	97.5	98.8	95.4	97.3	75.0	104.5	72.0	*	120.5	125.2	87.2	97.7	97.3*	111.4	90.0	72.3	73.9	89.8	134.7	94.5	83.9	80.3	116.3	113.9	112.4	99.3	76.7
2.10i - Emergency Hospital Admissions for Intentional Self-Harm	2015/16	196.5	93.8	101.1	103.2	95.0	60.2	106.0	79.5	*	115.6	112.1	66.2	71.5	103.2*	103.6	75.7	61.0	77.7	110.7	162.0	107.2	85.3	81.3	100.0	91.2	91.7	134.7	66.0
2.11i - Proportion of the population																													

2.11i - Proportion of the population

29-Jul-17

1:06 PM

² <http://www.phoutcomes.info/public-health-outcomes-framework#page/0/gid/1000042/pat/6/par/E12000007/ati/101/are/E09000025>

- Newham performs significantly worse than the England and London averages for physical activity in adults with just 44.8% of adults in Newham being physically **active** (2.13i) versus the London average of 57.8% and 39.8% of adults being physically **inactive** (2.13ii) compared to the London average of 28.1%.

FileEditViewHistoryBookmarksToolsHelp

CrashMapPublic Health Outcomes Framework

www.phoutcomes.info/public-health-outcomes-framework/page/0/gid/1000042/pat/6/par/E12000007/atf/101/are/E90000025

Search

☆

📁

⬇

🏠

🔍

⋮

Indicator	Period	England	London region	Barking and Dagenham	Barnet	Bexley	Brent	Bromley	Camden	City of London	Croydon	Ealing	Enfield	Greenwich	Hackney	Hammersmith and Fulham	Haringey	Harrow	Havering	Kingston	London Borough of Merton	London Borough of Newham	London Borough of Redbridge						
Admissions for Intentional Self-Harm	2015/16	196.5	93.8	101.1	103.2	95.0	80.2	106.0	79.5	*	115.6	112.1	66.2	71.5	103.2	103.6	75.7	61.0	77.7	110.7	162.0	107.2	85.3	81.3	100.0	91.2	91.7	134.7	66.0
2.11i - Proportion of the population meeting the recommended '5-a-day' on a 'usual day' (adults)	2015	52.3	49.4	43.2	56.7	49.4	41.2	53.8	52.5	36.5	51.1	47.4	45.1	47.2	46.7	50.4	57.5	51.6	42.1	45.7	48.5	57.9	52.6	56.7	48.7	44.0	55.1	41.8	47.1
2.11ii - Average number of portions of fruit consumed daily (adults)	2015	2.51	2.47	2.18	2.52	2.39	2.21	2.49	2.40	1.80	2.49	2.41	2.49	2.54	2.51	2.48	2.69	2.57	2.11	2.28	2.44	2.69	2.54	2.69	2.44	2.34	2.54	2.36	2.44
2.11iii - Average number of portions of vegetables consumed daily (adults)	2015	2.27	2.18	1.88	2.35	2.18	1.93	2.32	2.47	2.39	2.21	2.18	2.10	2.03	2.00	2.34	2.42	2.31	2.07	2.13	1.98	2.48	2.27	2.29	2.26	2.12	2.27	1.70	2.12
2.12 - Excess weight in Adults	2013 - 15	64.8	58.8	70.6	56.7	67.0	59.2	64.1	46.5	47.9	64.7	61.1	63.5	63.8	53.2	51.6	54.2	60.6	66.1	62.0	62.7	52.8	47.3	58.2	51.1	60.3	59.5	63.2	66.7
2.13i - Percentage of physically active and inactive adults - active adults	2015	57.0	57.8	48.0	59.5	53.9	49.2	62.9	64.0	45.8	60.6	54.7	55.5	51.5	53.8	61.0	58.2	55.0	55.4	51.5	55.0	60.3	67.1	66.1	68.1	58.8	58.7	44.8	57.5
2.13ii - Percentage of physically active and inactive adults - inactive adults	2015	28.7	28.1	43.7	28.7	31.9	34.3	23.8	28.6	21.0	25.7	27.8	29.3	29.0	28.6	25.6	28.2	29.6	30.4	31.2	29.9	23.6	21.9	20.8	23.2	27.1	28.0	39.8	28.1
2.14 - Smoking Prevalence in adults - current smokers (APS)	2016	15.5	15.2	18.8	14.8	12.5	12.8	13.8	11.4	*	13.2	15.4	13.1	17.4	19.6	19.6	17.7	7.4	14.9	15.2	13.8	13.4	18.0	13.8	17.3	21.2	12.7	22.3	10.4
2.14 - Smoking Prevalence in adult in routine and manual occupations - current smokers (APS)	2016	26.5	23.9	26.9	28.3	18.9	15.8	28.1	21.8	*	22.6	24.6	24.3	25.3	26.4	32.3	31.2	7.8	30.0	22.1	25.0	23.4	23.2	24.5	30.0	25.1	16.6	31.4	12.5
2.15iv - Deaths from drug misuse	2013 -	3.8	2.8						6.0		7.2			3.7	3.5		4.5					5.6			3.8	2.6			

WindowsTaskbarIcons

11:22 PM23-Jul-17