







Based upon the Ordnance Survey mapping with the permission of the controller of Her Majesty's Stationary Office - Crown copyright. Unauthorised reproduction may lead to prosecution or civil proceedings. L.B. Newham LA086517 1997

Existing concrete hump to be replaced with asphalted sinusoidal road hump

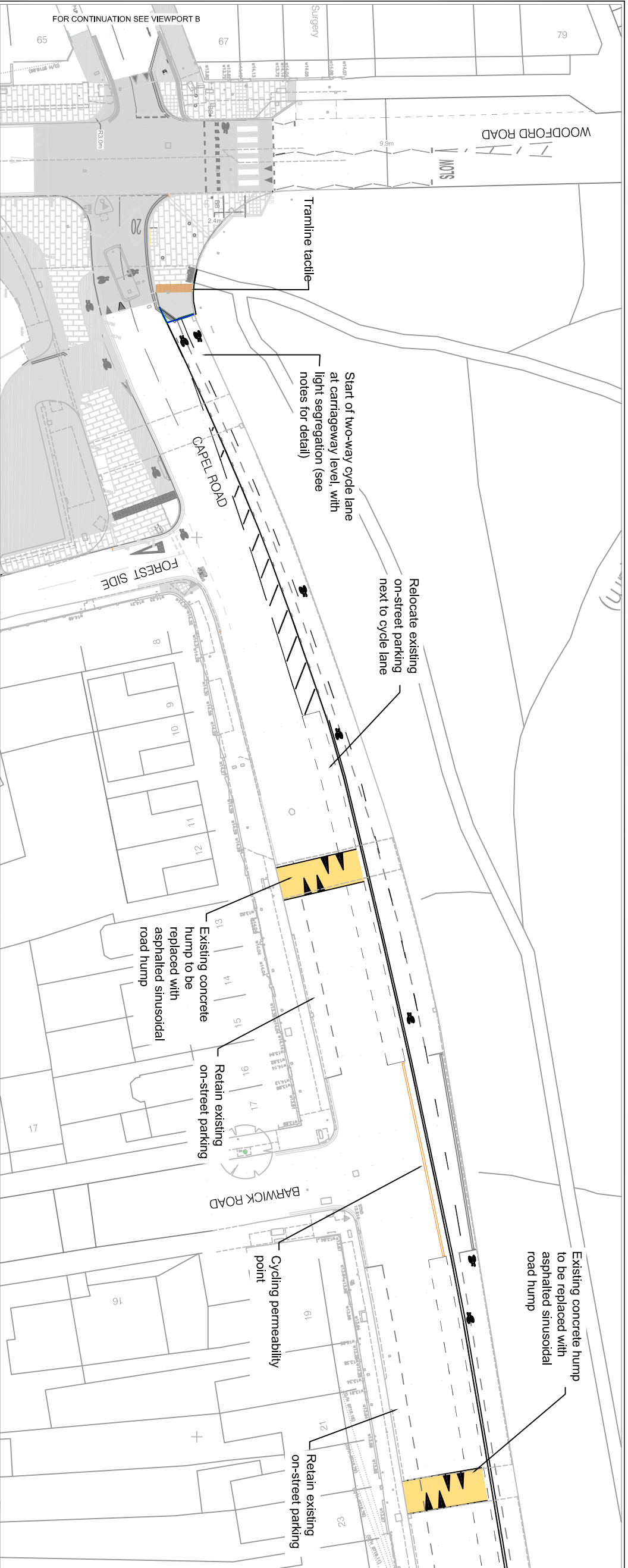
- Keys:**
-  Raised Road hump
 -  Tactile paving (red)
 -  Tactile paving (buff)
 -  Tramline tactile paving
 -  Build out or island
 -  Secure cycle parking hanger

Start of two-way cycle lane at carriageway level, with light segregation (see notes for detail)

Relocate existing on-street parking next to cycle lane

Cycling permeability point

Retain existing on-street parking



FOR CONTINUATION SEE VIEWPORT B

Continuation of two-way cycle lane at carriageway level

Relocate existing on-street parking next to cycle lane

Light segregation (see notes for detail)

Existing concrete hump to be replaced with asphalted sinusoidal road hump

Retain existing on-street parking

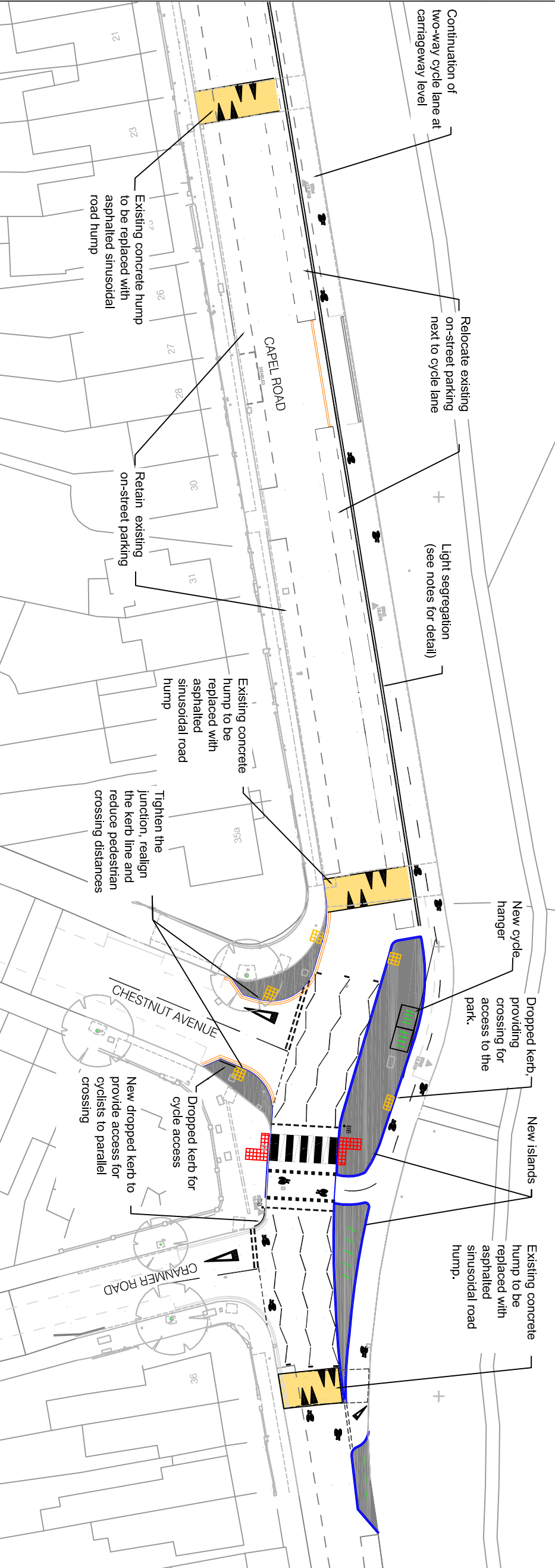
Existing concrete hump to be replaced with asphalted sinusoidal road hump

Tighten the junction, realign the kerb line and reduce pedestrian crossing distances

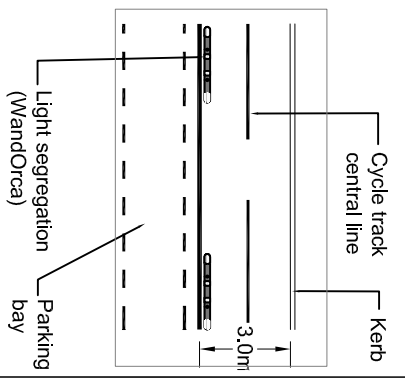
New cycle hanger providing access to the park.

New islands


Existing concrete hump to be replaced with asphalted sinusoidal road hump.



Detail of light segregation for consideration



REV	DATE	DESCRIPTION	BY	CHK

	
CLIENT	HIGHWAYS & TRAFFIC TRAFFIC MANAGEMENT & SAFETY
PROJECT	ALDGATE TO HAINAULT QUIETWAY
SUBJECT	CAPTEL ROAD From Woodford Road to Cranmer Road
CONTRACT No.	
SCALE	1:250
DRAWING No.	QWAH / 35EXT / 001
DATE ISSUED	August 2017